

iN3 (3 Wire Ordering)



5X7

1. Use iNavigator Order form to order Push Button Station (This will formulate exact model number, including sign sizing)

2. Order Ped Head Control Unit (iPHCU3W)



9X12



9X15

3. Order 3 Wire Cable *(You can use/supply own cable. See Polara website under iN3, Accessories, 3 Wire cable for specifications)*

Ordering Part Numbers:

iN3-CABLE-12:	12' long cable
iN3-CABLE-25:	25' long cable
iN3-CABLE-50:	50' long cable



Additional Optional Items – Mounting Adapters, Dongle, iN Set Up Box



Programming Options – Apps & Program are Free!



iOS (Apple)

- iPhone
- iPad & iPad Mini
- iPod touch



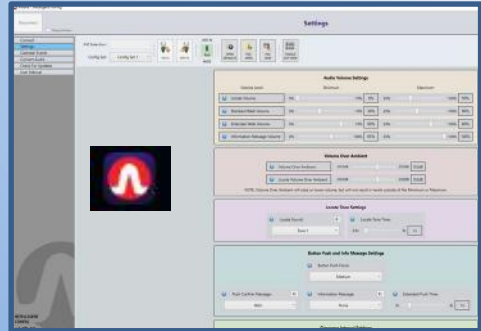
iPod touch

Devices not supplied by Polara



Android

- App for Android supported devices
(Devices not supplied by Polara)



PC App – “Intelligent Config” *(free download from Polara.com)*

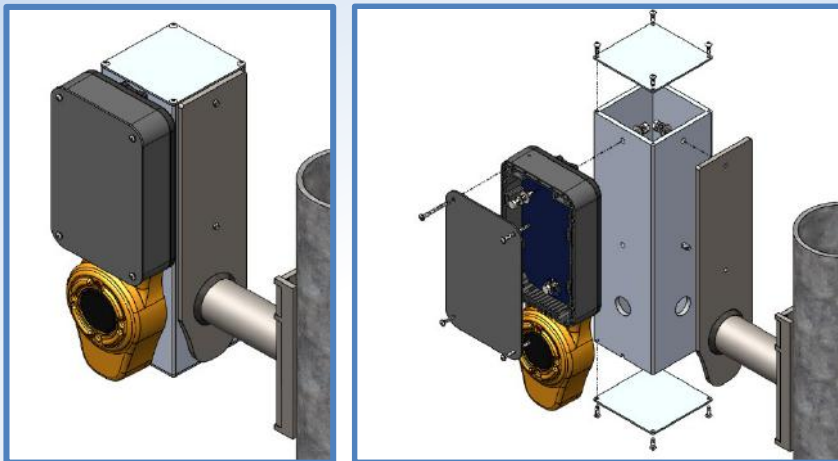
- Windows Laptop or Tablet
- *Polara Bluetooth Dongle Required*



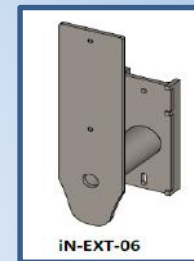
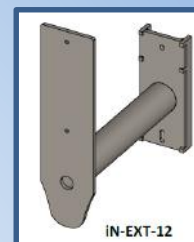
Additional Mounting Options

90 Degree Adapters for mounting iNavigator to left or right

IN-90DEGADPTR



Connects to
**iN 6 or 12
inch
Extenders**



Mounting Extenders & Dual Mount Adapters

Need Extra Reach? Challenges mounting on Decorative poles/Bases?

Extenders provide
6 or 12 Inch
Extension



Angled Mounting
Extenders allow a
5 Inch Height
Reduction

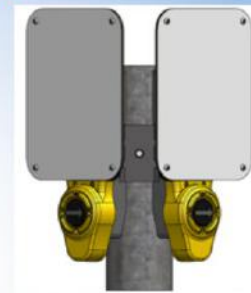
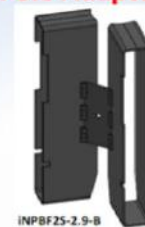


Mounting Extenders provide extra reach or
clearance to mount on Decorative Bases

6 or 12 Inch Extensions Available



**Polara iNavigator Dual Mount
Pole Adapters**



No need to turn Buttons upside down!
Adapters fit Two 9x12/15 Signs on a 2.9" or 4.5" O.D. Pole



iN2 (2 Wire Ordering)



5X7

1. Use iNavigator Order form to order Push Button Station

(This will formulate exact model number, including sign sizing)

2. Use Configurator form to assist in Central Control Unit & necessary accessories ordering.



9X12



9X15

2 Wire Central Communication System

iCCU-S **iCCU-C**

4 Cabinet Configurations

1. TS1
2. TS2 SDLC
3. TS2 BIU
4. 300 Series Cabinets (170/2070) Card

iCCU-S Central Control Unit Shelf Mount

Works in TS1 or TS2 (3 Cabinet Configuration Choices)



50 Pin 4 Cable

IN2-2WCABLE PLC to Interconnect Board



SDLC Cable

50 Pin 2 Cable

IN2-2WCABLE PLC to Interconnect Board



SDLC Cable

IN2-2WCABLE PLC to Interconnect Board

TS1 Configuration - 50 Pin 4 Cable Harness

- IN2-2CABLE – PLC wires to Interconnect board
(replaces cable #1 on 50 pin harness – Cable #1 not to be used)
- Cable 2 – wires to 4 channel Ped Inputs
- Cable 3 – **optional** GP inputs & Pre-emption
- Cable 4 – wires to Load Switch ped interval outputs

TS2 Split Configuration – 50 Pin 2 Cable Harness & SDLC

- IN2-2CABLE – PLC wires to Interconnect board
(replaces cable #1 on 50 pin harness – Cable #1 not to be used)
- Cable 2 – wires to 4 channel Ped Inputs
- Cable 3 – **optional** GP inputs & Pre-emption
- **SDLC** – **Receives Ped Interval timing from Controller**
(no high voltage load switch wiring – No cable #4 needed)

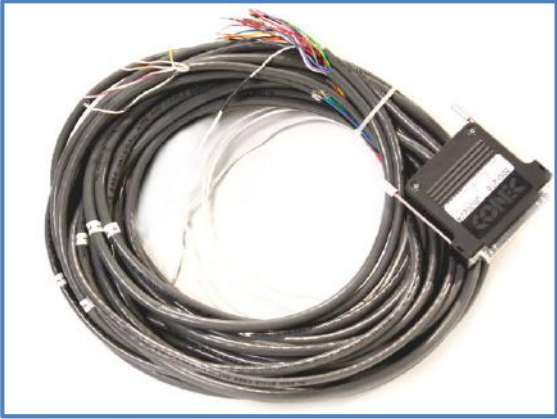
TS2 Configuration – BIU/SDLC no 50 Pin Harness

- IN2-2CABLE – PLC wires to Interconnect board
- **SDLC** - **Places Ped Calls to controller via SDLC**
(requires controller re-mapping)
Receives Ped Interval timing from Controller
(no high voltage load switch wiring)
If Pre-emption used – 50 Pin Harness w/Cable 3 required

iCCU-S 2 Wire System TS1 Components

1. **iCCU-S** - Now includes **IN2-2WCABLE** (replaces cable 1 on 50 pin harness – Cable 1 not to be used)
2. **850-217 Standard 50 Pin 4 Cable Harness** (**Multiple Lengths available. See numbers below**)
3. **iN2-ICB** - Interconnect Board

850-217	Standard Cable Harness 50 Pin Connector used with iCCU-S
850-390	Custom Cable Harness 50 Pin Connector used with iCCU-S (Cable #3, 8' for Preemption)
850-216	Custom Cable Harness 50 Pin Connector used with iCCU-S (All Cables 12')
iN2-ICB	Interconnect Board for iCCU-S or iCCU-B



50 Pin Cable Harness
(3 options for different lengths)



Interconnect Board
iN2-ICB

IN2-2WCABLE PLC



iCCU-S 2 Wire System TS2 Components – Hybrid/Split Configuration

1. iCCU-S- Now includes **IN2-2WCABLE** (replaces cable 1 on 50 pin harness – Cable 1 not to be used)
2. **811-207 - 50 Pin 2 Cable Harness** (Cable #2 Ped Inputs, Cable #3 Preemption or General Purpose Inputs)
3. **SDLC Cable – 2 Choices: 6ft straight or 4ft “Y” Splitter Cable**
4. **iN2-ICB - Interconnect Board**



811-207
(50 pin 2 cable)



IN2-SDLC-CABLE

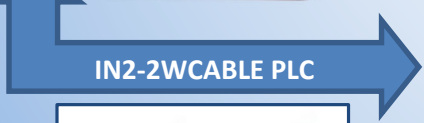


IN2-SDLC-YCABLE
(Y Splitter)

2 Choices



iN2-ICB
Interconnect Board



IN2-2WCABLE PLC



811-207 Use Cases:
Some agencies may not have Detector Rack BIU 1-4 assignment space and still need to use the 50 pin harness cable #2 to connect to the ped input file to place the calls.

Some agencies may not want to re-map the controller and still need to use the 50 pin harness cable #2 to connect to the ped input file to place the calls.

Preemption or General Input needs. When operating as a BIU, the iCCU-S doesn't receive preemption or other APS inputs via SDLC from the controller. Cable #3 gives this input capability.



iCCU-S 2 Wire System TS2 Components – Full BIU (All SDLC)

1. iCCU-S - Now includes **IN2-2WCABLE** (replaces cable 1 on 50 pin harness – Cable 1 not to be used)
2. **SDLC Cable** – 2 Choices: 6ft straight or 4ft “Y” Splitter Cable
3. **iN2-ICB - Interconnect Board**
4. ****For Pre-emption - Add 811-207 - 50 Pin 2 Cable Harness with Cable #3 Preemption or General Purpose Inputs**

2 Choices



IN2-SDLC-CABLE



IN2-SDLC-YCABLE
(Y Splitter)

iN2-ICB
Interconnect Board



811-207 (50 Pin 2 Cable):

For Preemption or General Input needs. When operating as a BIU, the iCCU-S doesn't receive preemption or other APS inputs via SDLC from the controller.

Cable #3 gives this input capability.

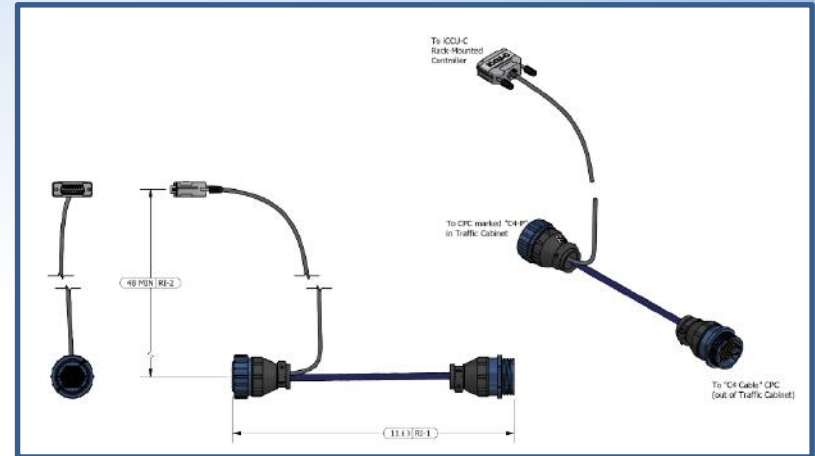


IN2-2WCABLE PLC



iCCU-C Card Rack Mount Systems Requirements

1. iCCU-C
2. C4 Connector Splitter Cable – iN2-C4CABLE-C
3. Interconnect Board – iN2-ICB-C
4. Power Supply – iN2-150WPS-C



C4 Connector iN2-C4-CABLE-C



Power Supply – iN2-150-WPS-C



Interconnect Board iN2-ICB-C



iNavigator 2-Wire Hardware Configuration Form

QUESTIONS	ANSWER	NEXT STEP
1. What type of controller/cabinet?	TS1 TS2 mode with MMU 300 Series with C4 ATC	Proceed to Option A Proceed to question #2 Proceed to Option F Proceed to Option A
2. A. Will you utilize SDLC for just PED outputs?	YES NO	Proceed to question #3 Proceed to Option A, or question 2B
B. Will you utilize SDLC for PED inputs and PED outputs (Full BIU)?	YES	Proceed to Option D or E
3. Do you have an open SDLC plug location?	YES NO	Proceed to Option B Proceed to Option C

OPTIONS TO ORDER

- A. (1) ICCU-S, (1) 850-217*, (1) iN2-ICB **NOTE: This Option "A" configuration with 50 pin harness is designed to work with all cabinet styles.**
- B. (1) ICCU-S, (1) 850-217* (or 811-207), (1) iN2-ICB, (1) iN2-SDLC-CABLE
- C. (1) ICCU-S, (1) 850-217* (or 811-207), (1) iN2-ICB, (1) iN2-YSDLC-CABLE (Splitter cable)
- D. (1) ICCU-S, (1) iN2-ICB, (1) iN2-SDLC-CABLE **
- E. (1) ICCU-S, (1) iN2-ICB, (1) iN2-YSDLC-CABLE (Splitter cable) **
- F. (1) ICCU-C, (1) iN2-ICB-C, (1) iN2-C4CABLE-C, iN2-150WPS-C

* Longer cable length options available, see 850-390 and 850-216 on website and price sheet

** If preemption message and general purpose input functions required, you must also order and use one 811-207 cable assembly.

DESCRIPTION OF EACH PART NUMBER

ICCU-S	Shelf mount Control Unit. Standard, or PED output (only) SDLC capability, or full PED input/output SDLC BIU capability.
ICCU-C	Rack mount 300 series Control Unit with C4-Y cable (splitter)
850-217	Standard 50 pin cable assembly. (4 cable harness. Cable 1 is no longer used. Replaced by iN2-2WCABLE supplied with each ICCU-S)
811-207	50 Pin, 2 cable assembly. Includes cable 2 for Ped Inputs and cable 3 for Preemption message/General Purpose Input functions
iN2-ICB	Interconnect Board for use with ICCU-S
iN2-ICB-C	Interconnect Board for use with ICCU-C only
iN2-SDLC-CABLE	Standard 6' SDLC cable
iN2-SDLC-YCABLE	SDLC-Y (Splitter cable)
iN2-2WCABLE	2-Wire PLC cable that connects on front terminal of ICCU-S and goes to iN2-ICB. One is supplied with every ICCU-S.
iN2-C4CABLE-C	C4-Y cable for use with ICCU-C
iN2-150WPS-C	150 watt supplemental power supply

03-10-2019 REV

iNavigator Order Form (Formulates Push Button Model Number)

Available for download at www.polar.com "iNavigator Page"

Intelligent Navigator Order Form

CHOICE

MODEL

IN2 = Intelligent Navigator, 2-Wire Push Button Station (PBS)
IN3 = Intelligent Navigator, 3-Wire Push Button Station (PBS)

SIZE

6 = 5' x 7 1/4" Sign Size
9 = 9' x 12" Sign Size †
3 = 9' x 15" Sign Size †

SIGN

0 = No Sign (-\$5.00 price reduction)
A = Option A (International Walking Sign, Black on White) 5x7 Only
B = Option B (Informational Sign) 5x7 Only
C = Option C (Countdown Sign) 9x12 Only
D = Option D (International Walking Sign, White on Black) 5x7 & 9x12 Only
V = Option V (Hi-Intensity Retroreflective MUTCD R10-3) 9x12 Only †
U = Option U (Hi-Intensity Retroreflective MUTCD R10-3b) 9x12 Only †
N = Option N (Hi-Intensity Retroreflective, Anti Graffiti (MUTCD R10-3e) 9x12 Only †
T = Option T (Hi-Intensity Retroreflective MUTCD R10-3e) 9x15 Only †
M = Option M (Diamond Grade Retroreflective MDOT) 9x15 Only †

BRAILLE

N = No Braille
B = Braille Text † (Provide details on page 2.)

SPECIAL VOICE MESSAGE

0 = Standard Messages
1 = Special Voice Messages* (Provide details on page 2.)

COLOR OF FRONT COVER

B = Black
G = Green
Y = Yellow

IN2 IN3

6 9 3

C D V U N T M

N B

0 1

B G Y

Navigator Part Number: **IN2 9 C N 0 - B**

Total Qty of PBSs:

SPECIAL BUTTON DESIGNATORS †
The following additional options are available. Check any options desired.

-BD for Bi-Directional (double) Arrow
 -NA for No Arrow
 -WPC for Pole Cap
 -ES for External Speaker option

iPHCU3W - One per PBS required (iN3 Only) Qty:

12' Interconnect Cable (one per iPHCU3W required) Qty:

25' Interconnect Cable Qty:

iCCU-C - Control Unit Rack Mount Card (iN2 Only) Qty:

iCCU-S - Control Unit For Shelf Mount (iN2 Only) Qty:

iN-DGL - iNav Bluetooth Dongle Qty:

* Voice Message Delivery Options:

Special Message E-Mail Delivery (No Charge) Qty:
E-mail Address for Delivery:

Special Message Recording per Crossing † Qty:

Special Message Flash Drive † Qty:

Special Message Installed on PBS † Qty:

† Additional charges apply for these options.

Custom Voice Message Details

(Fill out one form per intersection)

Voice on Location and Walk Message(s) & Braille. Please give phonetic pronunciation on difficult street names so that we record them properly. Please note that unless Street, Drive, Avenue, etc... are necessary for intersection identification, it is recommended to leave them off.

Qty:

VOL: Wait to Cross at Wait
(Street Being Crossed) (Intersecting Street)

Walk Message: Walk sign is on to cross
(Street Being Crossed) (Street Being Crossed)

Arrow Direction (R/L) Street Name Being Crossed in BRAILLE

Qty:

VOL: Wait to Cross at Wait
(Street Being Crossed) (Intersecting Street)

Walk Message: Walk sign is on to cross
(Street Being Crossed) (Street Being Crossed)

Arrow Direction (R/L) Street Name Being Crossed in BRAILLE

Qty:

VOL: Wait to Cross at Wait
(Street Being Crossed) (Intersecting Street)

Walk Message: Walk sign is on to cross
(Street Being Crossed) (Street Being Crossed)

Arrow Direction (R/L) Street Name Being Crossed in BRAILLE

Qty:

VOL: Wait to Cross at Wait
(Street Being Crossed) (Intersecting Street)

Walk Message: Walk sign is on to cross
(Street Being Crossed) (Street Being Crossed)

Arrow Direction (R/L) Street Name Being Crossed in BRAILLE

Qty:

VOL: Wait to Cross at Wait
(Street Being Crossed) (Intersecting Street)

Walk Message: Walk sign is on to cross
(Street Being Crossed) (Street Being Crossed)

Arrow Direction (R/L) Street Name Being Crossed in BRAILLE

